



**TORQUE**  
ENGINEERING AUSTRALIA

## COMPANY PROFILE

January 2023

## Corporate Information

Registered Name : Torque Engineering Australia Pty Ltd  
ABN : 76 131 766 473  
Registered Address : Unit 3, 83-85 Catalano Circuit, Canning Vale  
Western Australia 6155  
Telephone : +61 400 205513  
Email : [admin@torqueengineering.com](mailto:admin@torqueengineering.com)  
Website : [www.torqueengineering.com](http://www.torqueengineering.com)

## About

Torque Engineering Australia Pty Ltd (TEA) is West Australian engineering solutions company specializing in projects in the offshore / marine industry.

We project manage, design, develop, manufacture and supply customized equipment that meets with international standards. The company focuses primarily in;

- Launch & Recovery Systems
- Specialised Winches and Reelers with DNV 2.7-1 Certification
- Seahorse Workboats™
- Development of Engineering & Installation Procedures
- Catenary Anchor Leg Mooring Systems

## History

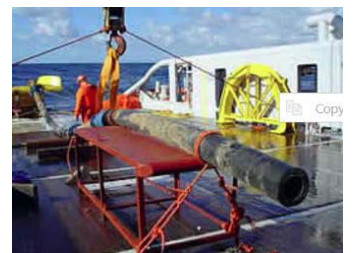
Torque Engineering was founded in Western Australia by Matrix Composites & Engineering and Mike Spiers in **2007**. The company was set up to service the specialized field of offshore deployment systems.

In **2008** Torque formed an alliance with Denith Engineering, a design and manufacture company.

In **2011** Torque was a finalist in the Australia Product of the year competition

In **2019** TEA was awarded by SPM Terminals Pty Ltd the worldwide marketing rights for their offshore oil import / export Terminals and associated equipment. SPM Terminals specialises in the design and manufacture of classed offshore CALM buoys for vessels up to 300,000 DWT.

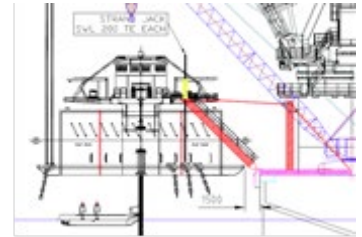
Jointly the above group has an impressive list of projects and delivered a diverse range of equipment solutions.



## Partnerships & Associations

Torque Engineering has strategic alliance agreements in place with the following companies for support in jointly tackling specialist projects.

- Ingenio
- SPM Terminals Pty Ltd
- Denith Engineering Pty Ltd
- UMD Energy Sdn Bhd



## Industries

Torque Engineering offers full EPCIC solutions and project management services to a broad spectrum of clients including

- Oil & Gas Operators
- Offshore / Marine Contractors
- Subsea Construction & Diving Contractors
- Mining companies



## Clients

Torque Engineering and their joint venture partners have provided products, technical services and solutions to a wide range of customers including;

- Banner SPM Terminals Pty Ltd
- De Beers Marine
- Namco Minerals
- CNOOC
- AGR
- Apache Energy
- Brunei Shell
- DOF Subsea
- Helix
- Neptune
- NorCE Offshore
- SapuraAcergy
- SMIT Subsea
- Fugro



## Services

Torque Engineering services include

- EPCIC of Subsea Deployment Systems
- EPCIC of Offshore Mooring Terminal Systems
- Project Management
- Design and Fabrication of bespoke appliances
- Offshore Mooring Analysis & Calculations
- Finite Element Analysis
- Testing & Commissioning
- Rental of specialised materials handling equipment
- Rental of specialised underwater navigation system
- Operating and Maintenance Instruction Manuals

## Key Strengths

- **Strong partners** with excellent track records
- Ability to respond with **Cost Effective** solutions quickly
- Excellent design, machining and fabrication **resources**
- Good track record with **very satisfied customers**

## Product Examples

- Deep Ocean Deployment Systems
- Design & Supply of Single Point Mooring Systems – also available for rent
- Winches & Reelers
- Active & Passive Heave Compensation Control Systems
- Seahorse Workboats™
- Flexible Lay Equipment
- Launch and Recovery Frames
- Vessel Mooring Equipment
- Installation Aids

## Seahorse Workboats™

Torque Engineering has had great success with the design and supply of HDPE workboats. Our latest designs utilise co-extruded pipe to mitigate the high temperatures the black finish produce.



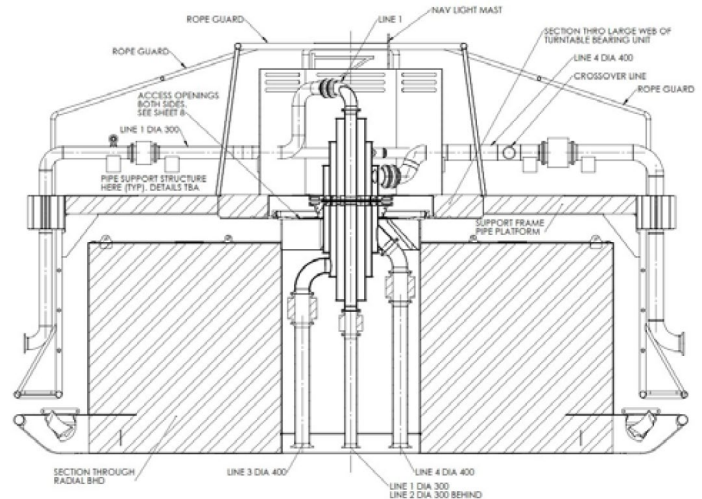
Specifications for Seahorse 730 workboat	
Standard	AS 1799.1:2021 Small Craft
Length	730 cm
Width	248 cm
Height	187 cm
Bow fendering	2 rows of heavy-duty D section rubber fenders
Side fendering	Rubbing strake
Fittings	Handrail at bow for personnel transfer
	2 x heavy duty cleats each side
Safety rope	1 each side
Mass	1,200 kg
Capacity	2,200 kg
Airtight compartments	3 – with 7,7 m <sup>3</sup> buoyancy
Transon height	570 mm
Scuppers	2 x self-draining
Lifting slings	1 x 4-leg 60 degree 5.2te SWL x 6m
Cradle	2 pieces
Ladder	



## Offshore Oil Export / Import Terminals - Catenary Anchor Leg Mooring Buoys

Torque Engineering together with SPM Terminals, are able to design and supply SPMs in "kit form " for assembly close to the installation location – resulting in increased local participation. Below is a typical specification of the SPM Terminals Banner Hex CALM Buoy we offer.

Preferred Yard	: PT. Nexus - Batam
Flag/Port Registry	: Client preference
Class	: ABS
Water Depth	: 100 msw
Tanker Size	: Typically 300,000 DWT
Outer Skirt Diameter	: 17 m
Centre well Diameter	: 3.6 m
Max Draft	: 2.8 m
Buoy Body Breadth	: 12 m
Hexagonal Diameter	: 13.9 m
Height	: 5.5 m
No of Compartments	: 6
Mass	: 280 Tonnes
Deck Manholes	: 1 per Compartment
Chain Hawser	: 6 Sets cup & Cone
Mooring Bollards	: 1
Mooring Chain	: 4.25" Chain
Cathodes Protection	: Sacrificial Anodes
Main Bearing	: Triple Row Roller Bearing
Swivel Unit	: Up to 4 Chambers (Products)
Rating	: Typically 150#
Mooring Bridle	: 400 Te SWL
Navigation Lights	: Tideland 6 NM Visibility, complete with Battery and Solar Panel



## Underwater Navigation Rental Equipment

Rental of Advanced Navigation browser based underwater navigation and survey system consisting of;

- GNSS Compass
- 1 x Subsonus with mounting and PoE injector
- 9 x Subsonus Tags
- 1 x Android communicator
- Interconnecting cables

